



NOTICE OF PUBLIC MEETING ABOUT MID-SACRAMENTO VALLEY REGIONAL CONSERVATION INVESTMENT STRATEGY

Published February 15, 2018

Description of Proposed Regional Conservation Investment Strategy: Reclamation District 108, on behalf of a steering committee including representatives from Colusa County, Sutter County, Sutter Butte Flood Control Agency, California Department of Water Resources, California Natural Resources Agency, Sutter Bypass Water Users Association, Caltrans, and other stakeholders, is preparing a Regional Conservation Investment Strategy (RCIS) for parts of Colusa County and Sutter County.

Regional Conservation Investment Strategies are new, voluntary, landscape-scale conservation planning tools, guided by state legislation (AB 2087) that took effect January 1, 2017. An RCIS will identify conservation priorities to guide public and private conservation actions and investment, such as habitat restoration and protection. The Mid-Sacramento Valley RCIS is part of a broader effort to implement regional advanced mitigation planning in the state to facilitate landscape-scale conservation and improve the delivery of flood protection, transportation, and other public infrastructure projects.

Development of the Mid-Sacramento Valley RCIS began as an outgrowth, in part, of the Mid and Upper Sacramento River Regional Flood Management Plan (RFMP). The Mid and Upper Sacramento River RFMP was developed through the participation of a range of stakeholders to address flood management in a seven-county region in northern California that comprises portions of Butte, Colusa, Glenn, Lake, Sutter, Tehama, and Yolo Counties. The result of the Mid and Upper Sacramento River RFMP planning effort is a vision for a flood-safe region that identifies challenges and opportunities for flood risk reduction, and a prioritized list of actions. The Mid and Upper Sacramento River RFMP provides a framework for integrating conservation efforts into the overall flood management system in ways that are supported locally. As the lead agency for preparing the Mid-Upper Sacramento River RFMP, Reclamation District 108 initiated development of the Mid-Sacramento Valley RCIS to aid in the implementation of needed flood risk reduction measures, and to provide incentives for landowners to propose conservation actions on their properties that would benefit species in need of mitigation offsets from flood management projects. To achieve this goal, the steering

committee began development of the RCIS within a subset of the Mid-Upper Sacramento River RFMP planning area in Colusa County and Sutter County, with a small extension of the RCIS area into the Feather River RFMP planning area in Sutter County.

A public meeting was held on December 6, 2017, to provide information about the RCIS and to give the public an opportunity to provide written and oral comments for consideration in its development. After the public meeting, the steering committee elected to expand the RCIS area further east in Sutter County to include California Department of Water Resources facilities and more of the Feather River RFMP planning area (see Figure 1 for a draft map of the RCIS area). **A second public meeting will be held on March 20, 2018 from 2:00 – 3:30 PM (see last page of this notice for address and directions) to provide oral or written comments for consideration in its development.**

The Mid-Sacramento Valley RCIS:

- Is a voluntary, non-binding assessment of conservation priorities for a suite of focal species (see Table 1, below);
- Is being developed based on existing plans and other information, including the Mid and Upper Sacramento River RFMP, the Feather River RFMP, the Central Valley Flood Protection Plan, and the Central Valley Flood Protection Plan Conservation Strategy, among others;
- Promotes implementation of conservation actions such as habitat protection, restoration, and enhancement measures, including efforts to enhance landscape connectivity for wildlife;
- Coordinates various types of conservation investments, such as:
 - local, state, and federal government conservation projects;
 - private foundation and conservation organization (e.g., Central Valley Habitat Exchange) projects;
 - mitigation projects by private entities and public agencies;
- In addition to focal species, also considers sensitive habitats, and addresses working lands, proposed infrastructure, and development projects;
- Will be submitted to the California Department of Fish and Wildlife (Department) in 2018 for their review, publication as a draft for public review, and approval.

Table 1. Draft Focal Species for the Mid-Sacramento Valley RCIS

Scientific Name	Common Name	Status ^a		
		Federal	State	Global
Invertebrate				
<i>Desmocerus californicus dimorphus</i>	Valley elderberry longhorn beetle	FT	–	G3T2 S2
Fish				
<i>Acipenser medirostris</i>	Green sturgeon	FT	–	G3 S1S2
<i>Oncorhynchus mykiss</i>	Central Valley steelhead	FT	–	G5T2Q S2

Scientific Name	Common Name	Status ^a		
		Federal	State	Global
<i>Onchorhynchus tshawytscha</i>	Sacramento River winter-run Chinook salmon	FE	SE	G5 S1
<i>Onchorhynchus tshawytscha</i>	Central Valley spring-run Chinook salmon	FT	ST	G5 S1
<i>Onchorhynchus tshawytscha</i>	Central Valley fall/late fall-run Chinook salmon	SOC	SSC	G5 S2
Reptiles				
<i>Thamnophis gigas</i>	Giant garter snake	FT	ST	G2 S2
<i>Emys marmorata</i>	Western pond turtle	UR	SOC	G3G4
Birds				
<i>Buteo swainsoni</i>	Swainson's hawk	–	ST	G5 S3
<i>Agelaius tricolor</i>	Tricolored blackbird	UR	SCE	G2G3 S1S2
<i>Coccyzus americanus occidentalis</i>	Western yellow-billed cuckoo	FT	SE	G5T2T3 S1
<i>Riparia riparia</i>	Bank swallow	–	ST	G5 S2

^a Status

Federal

SE = listed as endangered under the federal Endangered Species Act.

ST = listed as threatened under the federal Endangered Species Act.

SC = listed as a candidate species, which is a species for which the U.S. Fish and Wildlife Service has on file sufficient information to warrant a listing.

UR = under review. Species that have been petitioned for listing and for which a 90 day finding has not been published or for which a 90 day substantial has been published but a 12 Month finding have not yet been published in the Federal Register. Also includes species that are being reviewed through the candidate process, but the Candidate Notice of Review has not yet been signed.

– = no listing.

SOC = Species of concern.

State (CDFW July 2016, Special Animals List, Available: <https://nrm.dfg.ca.gov/FileHandler.ashx?DocumentID=109406>)

FE = listed as endangered under the California Endangered Species Act.

FT = listed as threatened under the California Endangered Species Act.

SSC = listed as a California Species of Special Concern by the California Department of Fish and Wildlife

FP = listed as a fully protected by the California Department of Fish and Wildlife

SC = listed as a candidate species. A candidate species is one that the California Fish and Game Commission has formally declared a candidate species.

Global Conservation Status (Nature Serve 2015. Available <http://explorer.natureserve.org/granks.htm>)

G1 = critically imperiled- high risk of extinction due to extreme rarity (often 5 or fewer populations)

G2 = imperiled- high risk of extinction due to very restricted range, very few populations (often 20 or fewer populations)

G3 = vulnerable- moderate risk of extinction due to restricted range and very few populations (often 80 or fewer populations)

G4 = apparently secure- uncommon but not rare

G5 = secure- common, widespread and abundant

G#G# = Range rank; numeric range rank (e.g., G2G3) is used to indicate the range of uncertainty in the status of a species or community.

Q = Questionable taxonomy; taxonomic distinctiveness of this entity at the current level is questionable; resolution of this uncertainty may result in change from a species to a subspecies or hybrid.

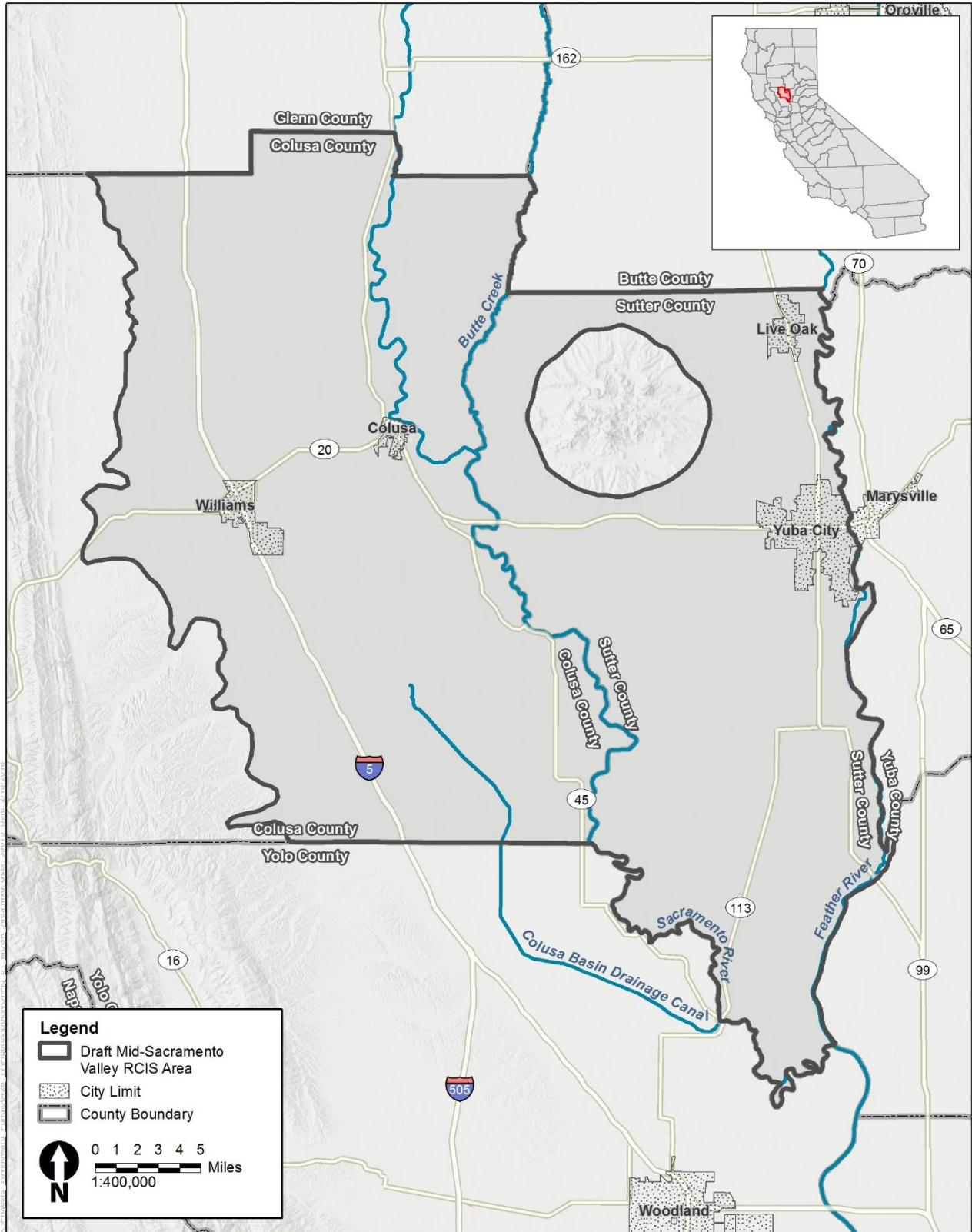
T# = Intraspecific taxon; the status of intraspecific taxa (subspecies or varieties) are indicated by a "T-rank" following the species' global rank.

Rules for assigning T-ranks follow the same principles outlined for global conservation.

Once the Mid-Sacramento Valley RCIS is finalized, it can help expedite delivery of public infrastructure projects by facilitating regional advance mitigation planning: a process in which the environmental mitigation for impacts from multiple projects is pooled and conducted in advance, resulting in larger conservation projects that have greater benefits, while expediting delivery of public infrastructure projects such as flood protection or transportation projects and minimizing impacts on agriculture and other land uses. Conservation goals, objectives, and priorities described in the Mid-Sacramento Valley RCIS will guide and coordinate future conservation actions throughout the RCIS area in eastern Colusa County and much of Sutter County west and north of the Feather River. If the Mid-Sacramento Valley RCIS is approved by the Department, the RCIS could be used by anyone to develop mitigation credit agreements with the Department. A mitigation credit agreement allows a landowner to use or sell mitigation credits for a variety of resources such as state-listed species.

Location: The geographic area covered by the Mid-Sacramento Valley RCIS includes portions of Colusa County and Sutter County, on the floor of Central Valley (see Figure 1 for a draft map of the RCIS area).

Figure 1. Geographic Area Covered by the Mid-Sacramento Valley RCIS



Public Meeting: Pursuant to Fish and Game Code section 1854(c)(3), the steering committee for the Mid-Sacramento Valley RCIS will sponsor a public meeting to provide information about the Mid-Sacramento Valley RCIS and to give the public an opportunity to provide oral or written comments for consideration in its development. Interested parties are invited to attend.

Meeting Date and Time: Tuesday, March 20, 2018, 2:00 to 3:30 PM

Meeting Location: Reclamation District 108 Office, 975 Wilson Bend Road, Grimes CA 95950

Please follow these directions:

Take I-5 to the first Woodland exit, Road 102 (Knights Landing exit). Head east to Knights Landing. Right before the Sacramento River Bridge, you will see a sign for HWY 45 heading north. Turn left onto HWY 45 and stay on HWY 45 for approximately 15-16 miles. In the middle of a 45 degree turn, you will see Wilson Bend Road (there is a District sign on the corner, and it is less than 2 miles north of County Line Road). Turn right onto Wilson Bend Road. Go about 4 miles and you will see the District Office on the left. Park in front of the older part of the office and walk back to the new front door.

Contact Person: Meegan Nagy, Deputy Manager, Reclamation District 108: email – MNagy@rd108.org; phone – (530) 812-6269

* * *