



State of California  
 Department of Water Resources

**FloodSAFE**  
 CALIFORNIA

DEPARTMENT OF WATER RESOURCES

**GENERAL NOTES**

The maps contained herein meet the informational urban area 200-year floodplain mapping requirements set forth by Senate Bill (SB) 1278, as amended by Assembly Bill (AB) 1965 (September 25, 2012), which amended Section 9610(d) of the California Water Code.

**10 Urban Areas and SPFC Facilities**

Within the 2012 Central Valley Flood Protection Plan, the State Systemwide Investment Approach (SSIA) provides that the Department of Water Resources (DWR) will evaluate and participate in projects that contribute to achieving an urban level of flood protection through reconstructing, rehabilitating, or improving State Plan of Flood Control (SPFC) facilities for the following urban areas in the Central Valley:

- Chico
- Yuba City
- Marysville
- Woodland
- Davis
- Sacramento Metropolitan Area (Sacramento and West Sacramento)
- Stockton Metropolitan Area (Stockton and Lathrop)
- Merced

**200-Year Informational Floodplain Maps**

These maps identify facilities of the SPFC and provide information that will help the communities make determinations relating to their urban level of flood protection. The following is depicted for each of these urban areas:

- Land use planning Sphere of Influence
- State Plan of Flood Control facilities
- Composite floodplains with water surface elevation contours resulting from failure of the SPFC urban facilities during flooding from the 200-year event.

These maps were produced using hydrologic and hydraulic modeling applications developed by the (DWR) following the Draft Urban Level of Flood Protection (ULFP) Criteria and Urban Levee Design Criteria (ULDC). Levee geotechnical reliability information included in the hydraulic models was derived from DWR's Urban Levee and Non-Urban Levee Evaluation programs. Water surface elevations resulting from failure of SPFC urban levees only are depicted. They do not include other potential flooding sources. For display purposes, the 200-year floodplains are shown clipped at the Sphere of Influence boundary for each urban area.

**Disclaimer of Liability**

DWR MAKES NO WARRANTIES, REPRESENTATIONS OR GUARANTEES, EITHER EXPRESSED OR IMPLIED, AS TO THE COMPLETENESS, ACCURACY OR CORRECTNESS OF THE 200-YEAR FLOODPLAIN MAPS, NOR ACCEPTS OR ASSUMES ANY LIABILITY ARISING FROM OR FOR ANY INCORRECT, INCOMPLETE OR MISLEADING DATA PROVIDED PURSUANT TO THIS REQUEST. THESE MAPS ARE INTENDED TO ASSIST COMMUNITIES IN MAKING DETERMINATIONS RELATING TO THEIR URBAN LEVEL OF FLOOD RISK. COMMUNITIES SHOULD MAKE THEIR OWN INDEPENDENT DETERMINATIONS RELATED TO FLOOD RISK LIABILITY AND ALL OTHER POTENTIAL FLOOD SOURCES.

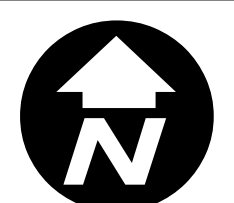
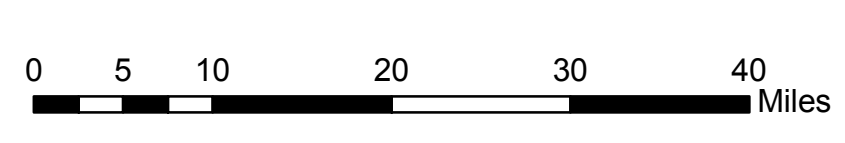
**Other Mapping Applications**

These maps are distinct from the Levee Flood Protection Zone (LFPZ) maps previously developed by DWR. The LFPZ maps estimate the maximum area that may be flooded if a SPFC facility failed with flows conveyed at maximum capacity (i.e., maximum flows that can reasonably be conveyed). The SB 1278 informational maps consider flows from the 200-year event yielding maps that are more detailed than the LFPZ map.

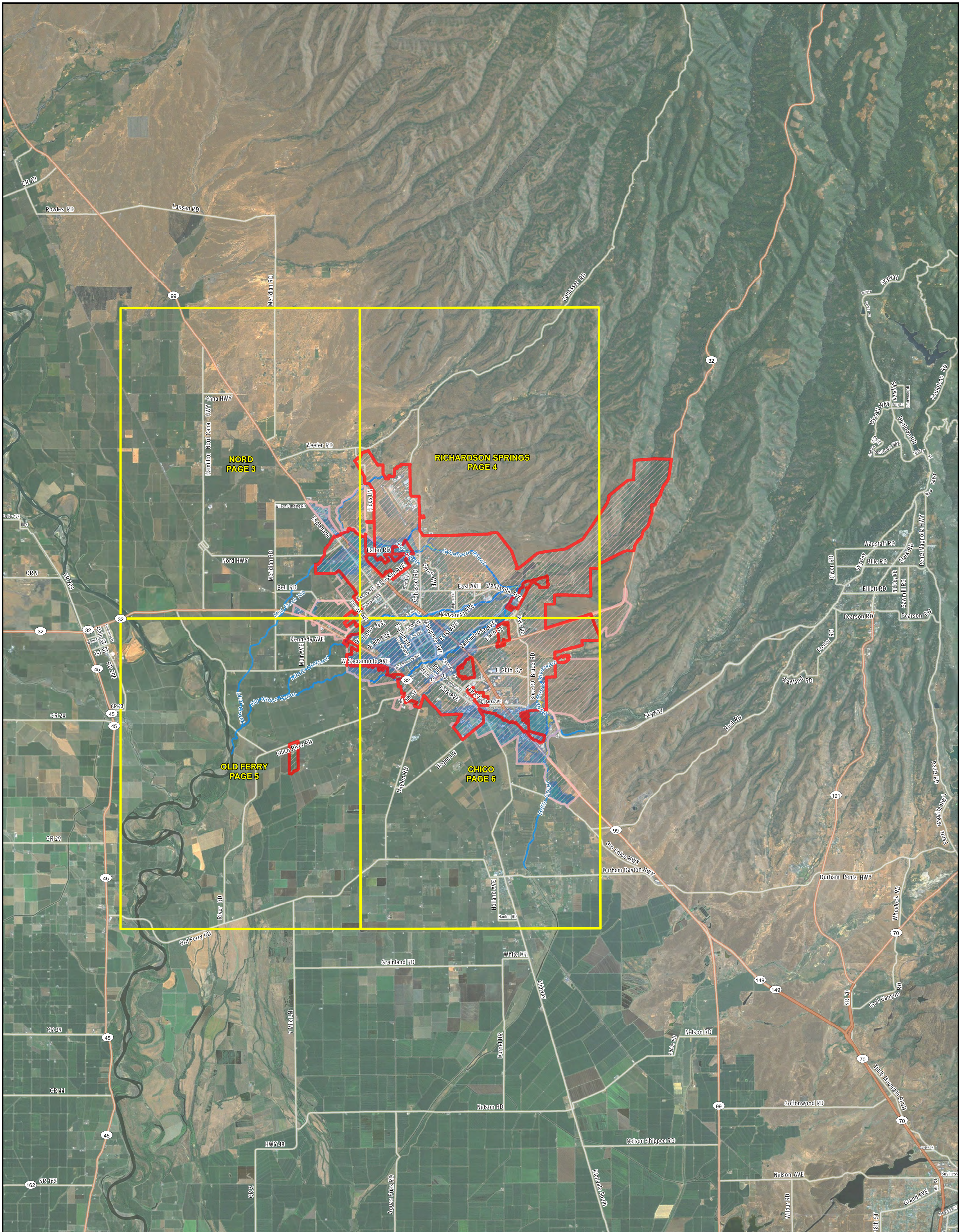
The SB 1278 informational maps should not be confused with Federal Emergency Management Agency's Flood Insurance Rate Maps used for the National Flood Insurance Program. They were prepared for different purposes and do not show the same type of flood hazard.

The models and fundamental datasets utilized to generate these informational maps may be configured for feasibility or design studies of particular interest.

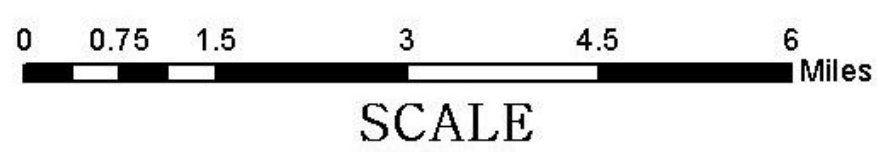
Senate Bill 1278/Assembly Bill 1965  
 Urban Level of Flood Protection Informational Mapbook  
 Sacramento River Basin - Chico Study Area



I:\To\_DWR\_for\_ChicoCommunity\FEIS\mapbook\032\_ST\_6\_SB1278\mapbook\mof\study\_area\Chico\Chico\_InformationalMap\_2013\_06\_26.mxd



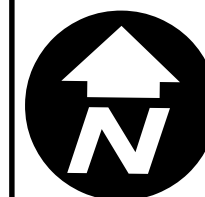
- City of Chico Incorporated Area
- City of Chico Sphere of Influence and Special Planning Areas
- 200-Year Riverine Flood Zone
- 200-Year Floodplain
- Streams
- Major Highways
- Highways
- Major Roads
- Main Rail Line



**Senate Bill 1278/Assembly Bill 1965  
Urban Level of Flood Protection Informational Map**

**Sacramento River Basin  
Chico Study Area  
Regional Quad Index**

**FloodSAFE**  
CALIFORNIA DEPARTMENT OF WATER RESOURCES

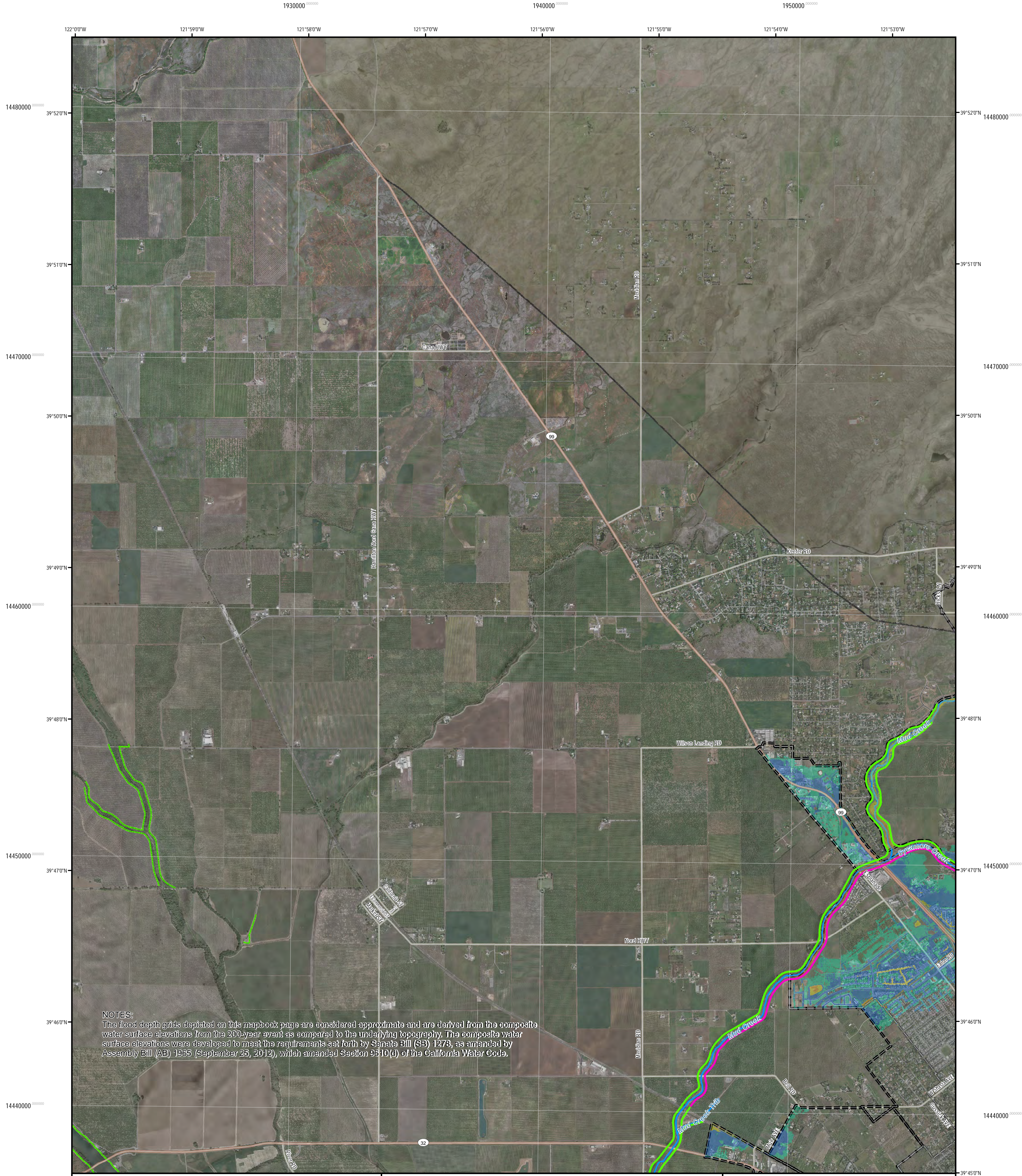


Prepared By: CH2MHILL

Figure: 2  
Date: June 11, 2013

ChicoRegionalQuadIndex\_2013\_06\_11

Datum: NAD83      Projection: UTM  
Zone: 10N          Units: US Feet  
Sources: ESRI Streetmaps North America and World Imagery



**NOTES:**  
 The flood depth grids depicted on this mapbook page are considered approximate and are derived from the composite water surface elevations from the 200-year event as compared to the underlying topography. The composite water surface elevations were developed to meet the requirements set forth by Senate Bill (SB) 1278, as amended by Assembly Bill (AB) 1965 (September 25, 2012), which amended Section 3510(d) of the California Water Code.

**200-Year Flood Depth (ft)**

- < 1
- 1 - 3
- 3 - 5
- 5 - 10
- 10 - 20
- 20 - 30
- > 30

**CVFED Levees**

- Non-Urban Non-State Plan of Flood Control
- Non-Urban State Plan of Flood Control
- Urban Non-State Plan of Flood Control
- Urban State Plan of Flood Control

**Legend:**

- City of Chico - Incorporated Area
- City of Chico - Sphere of Influence and Special Planning Areas
- Major Highways
- Highways
- Major Roads
- Main Rail Line

**Model Stream Name**

- Model Streams

SCALE 1:24,000

0 1,000 2,000 4,000 6,000 8,000 Feet

**Senate Bill 1278/Assembly Bill 1965  
 Urban Level of Flood Protection Informational Map  
 with Flood Depths**

**Sacramento River Basin  
 Chico Study Area  
 Nord USGS Quadrangle  
 Page: 3-A**

**FloodSAFE CALIFORNIA** DEPARTMENT OF WATER RESOURCES

Prepared By **CH2MHILL** Figure: 3-A  
 Date: June 12, 2013

ChicoMapbookQuadVerA\_2013\_06\_12

Datum: NAD83 Projection: UTM  
 Zone: 10N Units: US Feet  
 Sources: ESRI Maps - Streetmaps North America, MS Bing Maps, DWR CVFED Orthophoto Imagery

**NOTES:**  
 The flood depth grids depicted on this mapbook page are considered approximate and are derived from the composite water surface elevations from the 200-year event as compared to the underlying topography. The composite water surface elevations were developed to meet the requirements set forth by Senate Bill (SB) 1278, as amended by Assembly Bill (AB) 1965 (September 25, 2012), which amended Section 9310(d) of the California Water Code.

**200-Year Flood Depth (ft)**

- < 1
- 1 - 3
- 3 - 5
- 5 - 10
- 10 - 20
- 20 - 30
- > 30

**CVFED Levees**

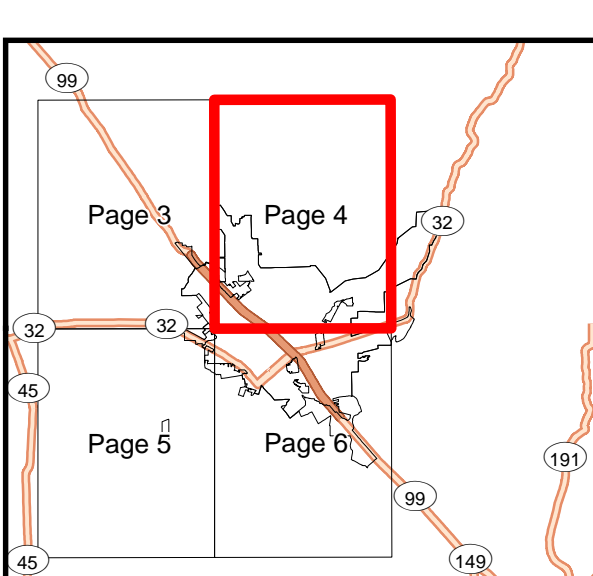
- Non-Urban Non-State Plan of Flood Control
- Non-Urban State Plan of Flood Control
- Urban Non-State Plan of Flood Control
- Urban State Plan of Flood Control

**Legend**

- City of Chico - Incorporated Area
- City of Chico - Sphere of Influence and Special Planning Areas
- Major Highways
- Highways
- Major Roads
- Main Rail Line

**Mud Creek Model Stream Name**

- Model Streams




SCALE 1:24,000

0 1,000 2,000 4,000 6,000 8,000 Feet

**Senate Bill 1278/Assembly Bill 1965  
 Urban Level of Flood Protection Informational Map  
 with Flood Depths**

**Sacramento River Basin  
 Chico Study Area  
 Richardson Springs USGS Quadrangle  
 Page: 4-A**

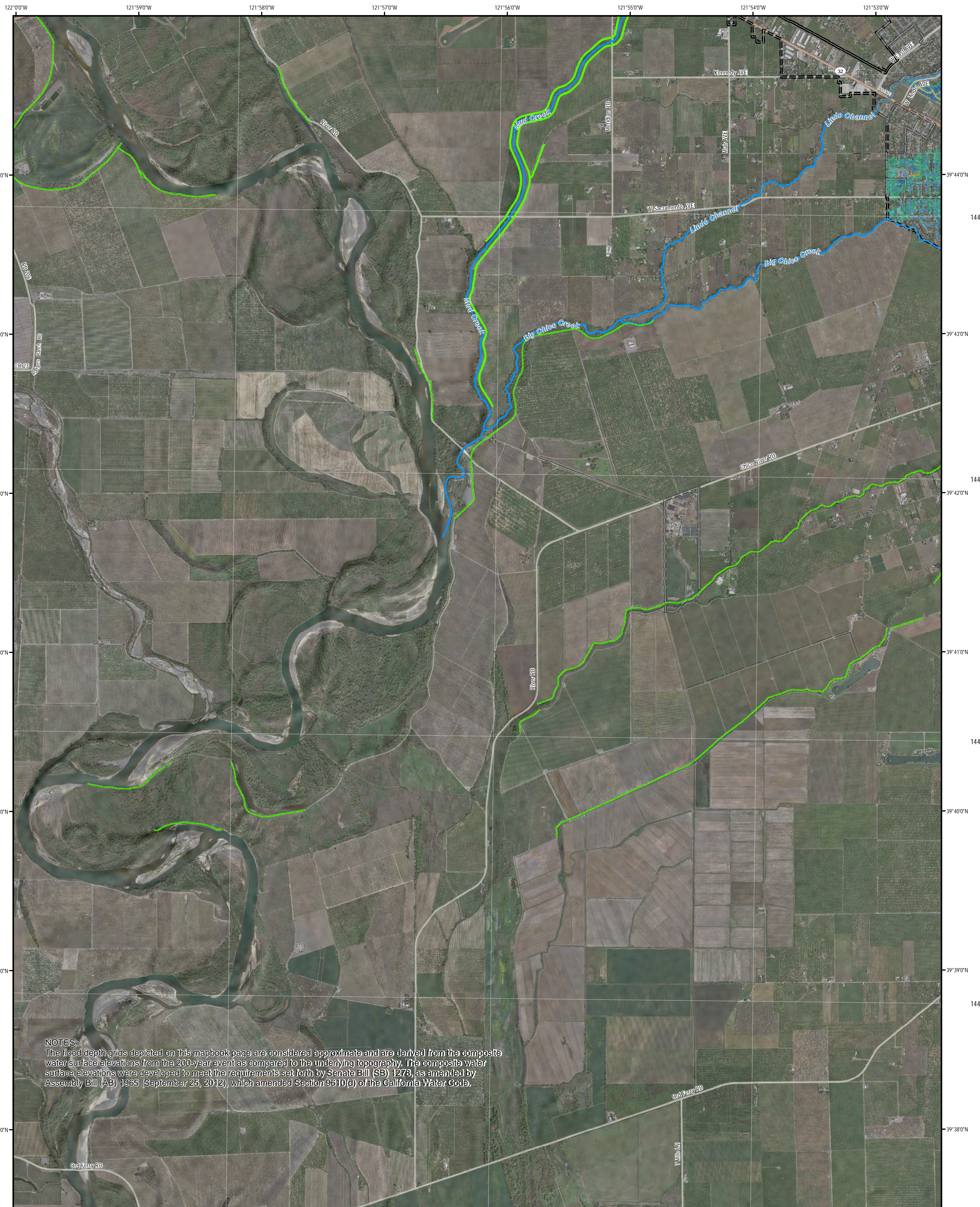
**FloodSAFE**  
 CALIFORNIA DEPARTMENT OF WATER RESOURCES



Prepared By **CH2MHILL** Figure: 4-A  
 Date: June 12, 2013

ChicoMapbookQuadVerA\_2013\_06\_12

Datum: NAD83 Projection: UTM  
 Zone: 10N Units: US Feet  
 Sources: ESRI Maps - Streetmaps North America, MS Bing Maps, DWR CVFED Orthophoto Imagery

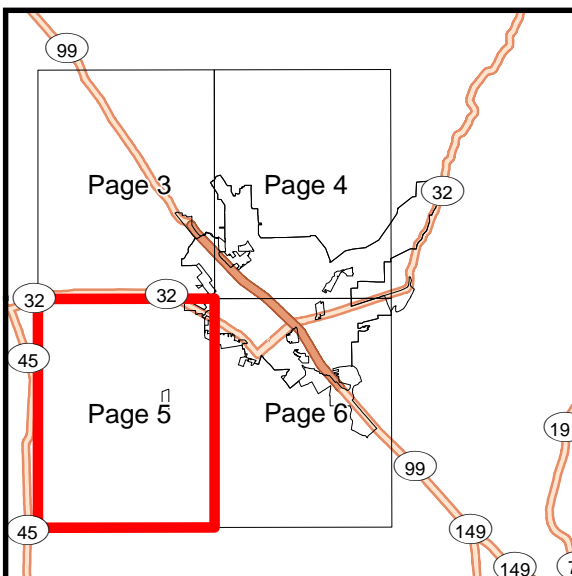


**NOTES:**  
 The flood depth grids depicted on this mapbook page are considered approximate and are derived from the composite water surface elevations from the 200-year event as compared to the underlying topography. The composite water surface elevations were developed to meet the requirements set forth by Senate Bill (SB) 1278, as amended by Assembly Bill (AB) 1965 (September 25, 2012), which amended Section 9610(d) of the California Water Code.

- 200-Year Flood Depth (ft)**
- < 1
  - 1 - 3
  - 3 - 5
  - 5 - 10
  - 10 - 20
  - 20 - 30
  - > 30

- City of Chico - Incorporated Area
- City of Chico - Sphere of Influence and Special Planning Areas
- Major Highways
- Highways
- Major Roads
- Main Rail Line

- CVFED Levees**
- Non-Urban Non-State Plan of Flood Control
  - Non-Urban State Plan of Flood Control
  - Urban Non-State Plan of Flood Control
  - Urban State Plan of Flood Control



Mud Creek Model Stream Name  
 Model Streams

SCALE 1:24,000  
 0 1,000 2,000 4,000 6,000 8,000 Feet

**Senate Bill 1278/Assembly Bill 1965  
 Urban Level of Flood Protection Informational Map  
 with Flood Depths**

**Sacramento River Basin  
 Chico Study Area  
 Ord Ferry USGS Quadrangle  
 Page: 5-A**

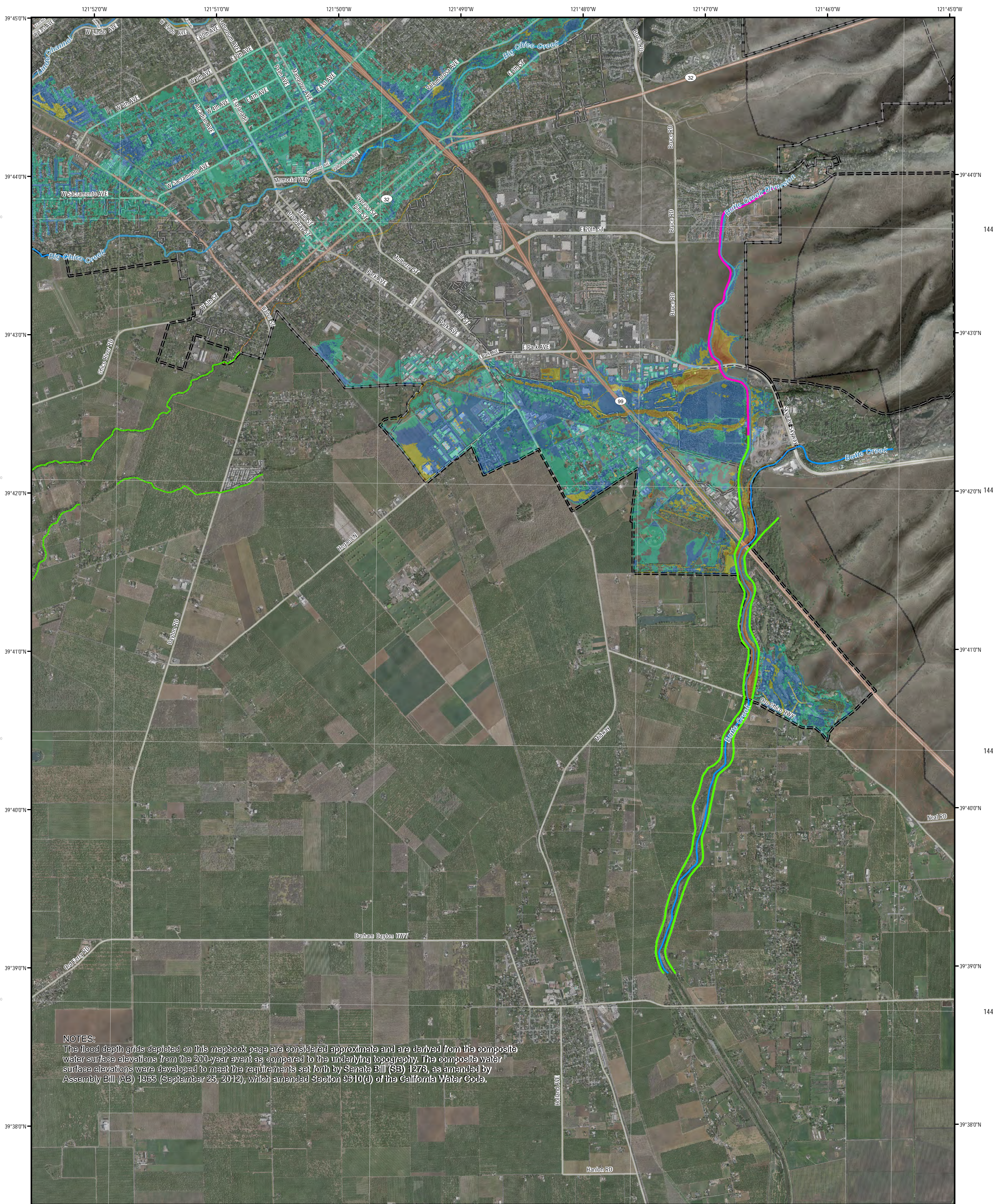


Prepared By CH2MHILL

Figure: 5-A  
 Date: June 12, 2013

ChicoMapbookQuadVerA\_2013\_06\_12

Datum: NAD83 Projection: UTM  
 Zone: 10N Units: US Feet  
 Sources: ESRI Maps - Streetmaps North America, MS Bing Maps, DWR CVFED Orthophoto Imagery



**NOTES:**  
 The flood depth grids depicted on this mapbook page are considered approximate and are derived from the composite water surface elevations from the 200-year event as compared to the underlying topography. The composite water surface elevations were developed to meet the requirements set forth by Senate Bill (SB) 1278, as amended by Assembly Bill (AB) 1965 (September 25, 2012), which amended Section 9310(d) of the California Water Code.

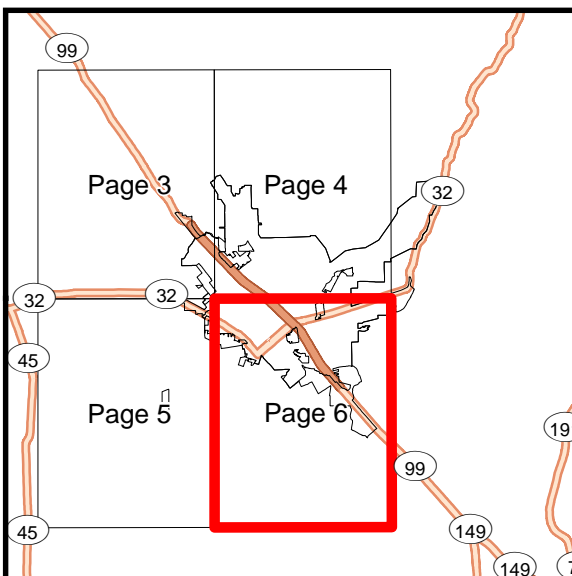
**200-Year Flood Depth (ft)**

- < 1
- 1 - 3
- 3 - 5
- 5 - 10
- 10 - 20
- 20 - 30
- > 30

- City of Chico - Incorporated Area
- City of Chico - Sphere of Influence and Special Planning Areas
- Major Highways
- Highways
- Major Roads
- Main Rail Line

**CVFED Levees**

- Non-Urban Non-State Plan of Flood Control
  - Non-Urban State Plan of Flood Control
  - Urban Non-State Plan of Flood Control
  - Urban State Plan of Flood Control
- Mud Creek Model Stream Name
- Model Streams



SCALE 1:24,000  
 0 1,000 2,000 4,000 6,000 8,000 Feet

**Senate Bill 1278/Assembly Bill 1965  
 Urban Level of Flood Protection Informational Map  
 with Flood Depths**

**Sacramento River Basin  
 Chico Study Area  
 Chico USGS Quadrangle  
 Page: 6-A**



Prepared By **CH2MHILL**

Figure: 6-A  
 Date: June 12, 2013

ChicoMapbookQuadVerA\_2013\_06\_12

Datum: NAD83 Projection: UTM  
 Zone: 10N Units: US Feet  
 Sources: ESRI Maps - Streetmaps North America, MS Bing Maps, DWR CVFED Orthophoto Imagery