

Conservation Strategy

Marc Hoshovsky, DWR

Upper and Middle Sacramento RFMP

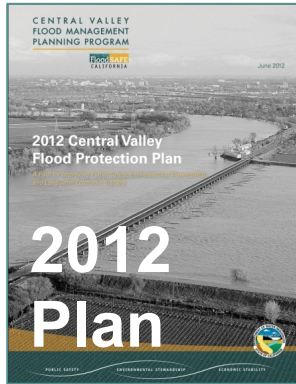
August 29, 2013

PUBLIC SAFETY

ENVIRONMENTAL STEWARDSHIP

ECONOMIC STABILITY

Refining the investment approach

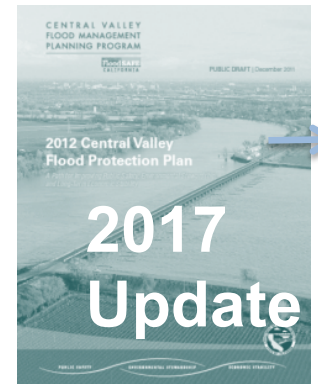


Basin-wide Feasibility Studies

Conservation Strategy



Regional Flood Management Plans



2012

/

2013

/

2014

/

2015

/

2016

Conservation Strategy Contents



- Ecological conditions, problems and conservation needs
- Conservation goals & objectives
- Technical analysis
 - to inform BWFS and regional planning
- Management approaches to support flood improvements
 - regional permitting
 - advance mitigation projects
 - fish passage
 - vegetation management
 - habitat tracking

Fish Barriers

Known and Potential Barriers to Fish Passage on Anadromous Streams within the Systemwide Planning Area

- Dam
- Road crossing
- Diversion (DWR)
- Flood control channel
- Weir
- Culvert
- Pumping Plant
- Flow measurement weir

Known barriers: 93

Potential barriers: 95
(need assessment)

— Current and Historic Anadromous Streams in the Central Valley

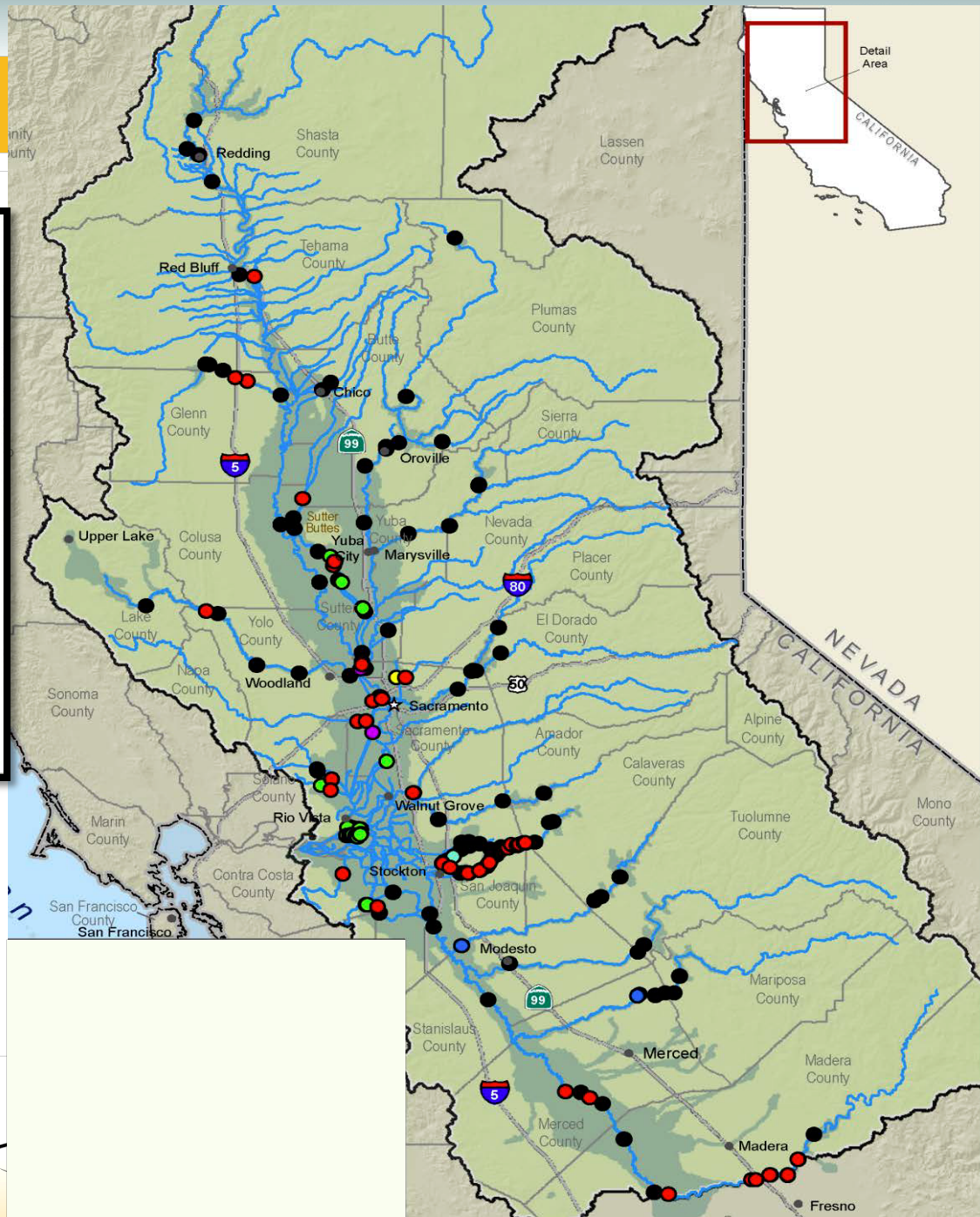
Systemwide Planning Area

Sacramento and San Joaquin Valley Watersheds

0 17.5 35



Scale In Miles



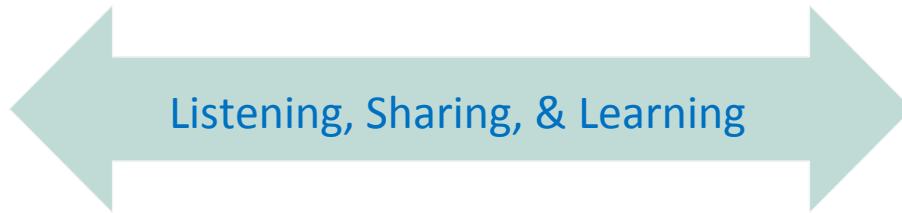
Why a Conservation Strategy?

- Improve project delivery with environmental benefits
- Broaden collaboration, public support & funding
- Meet CVFPP goals
- Meet legislative environmental direction
- Improve environmental conditions & trends



Working with RFMPs

Regional Perspectives



Systemwide Environmental Perspectives



• Information Sharing

- Key problems, opportunities, objectives
- Science & planning information
- Successful techniques

• Collaborative Problem Solving

- Connections to other experts
- Assistance working with resource agencies

Working with Landowners



Multi-Objective Flood Management example



Dos Rios,
Three Amigos, &
San Joaquin River NWR